

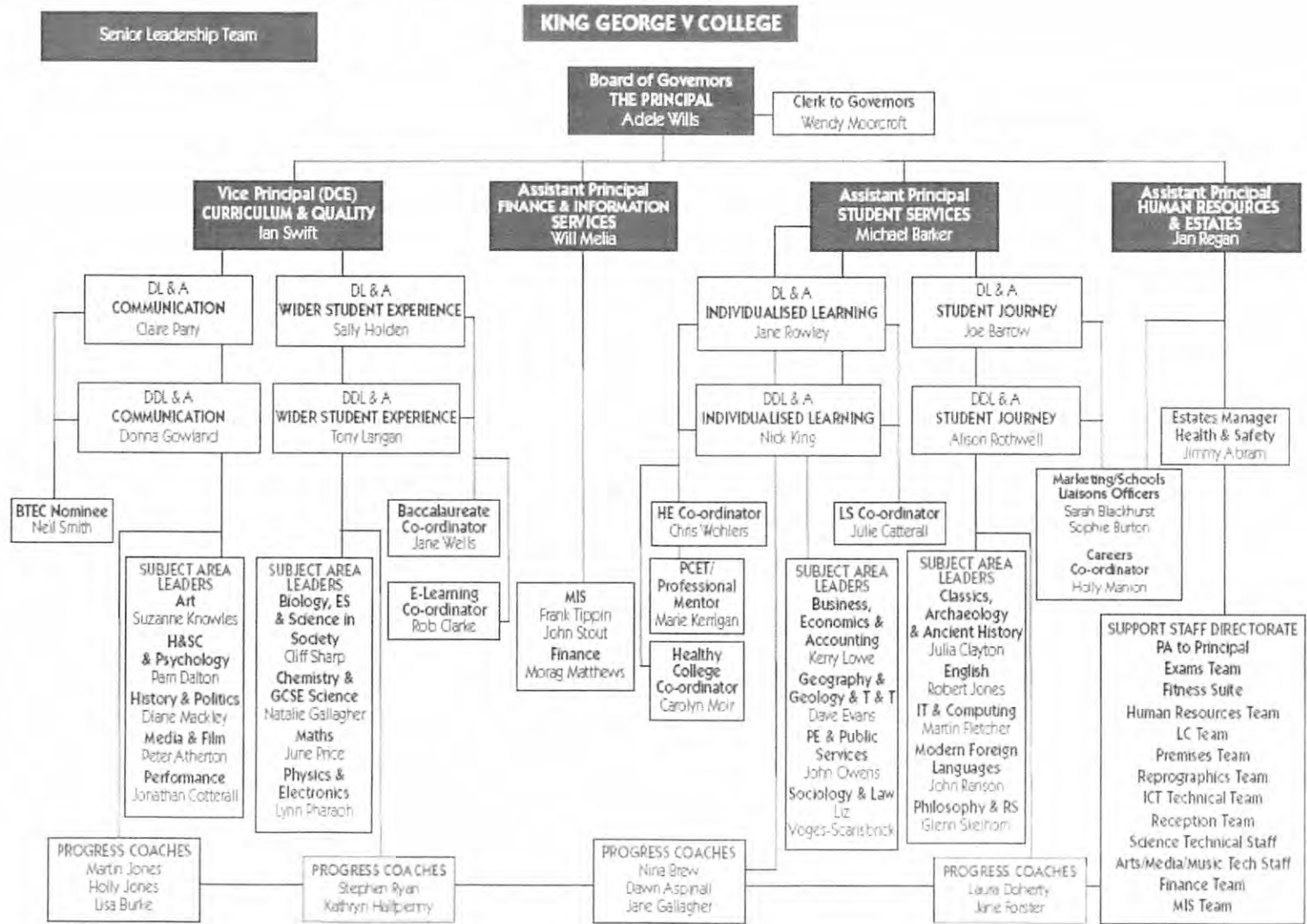


KING GEORGE V COLLEGE

GENERAL EQUALITY DUTY DATA

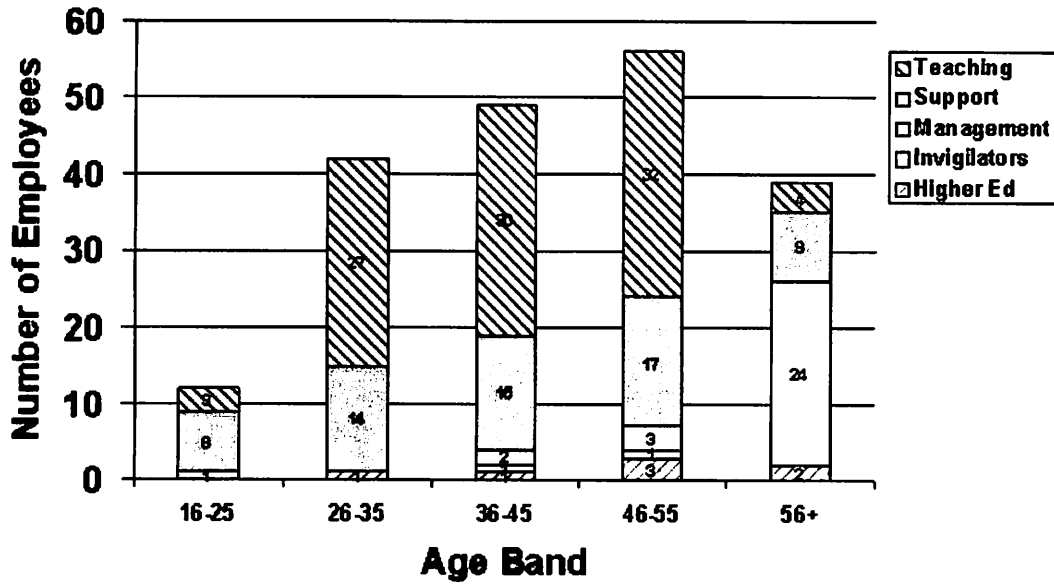
2011/12

College Organisational Chart 2011/12



Age Profile

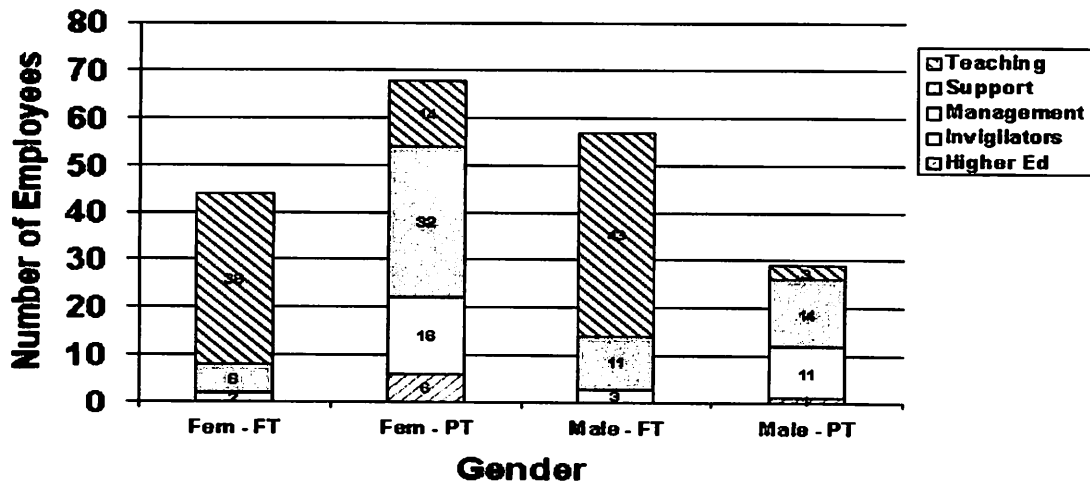
Age 2011/2012



There are no current issues with regards to the age profile of staff which is well balanced across the age range.

Gender

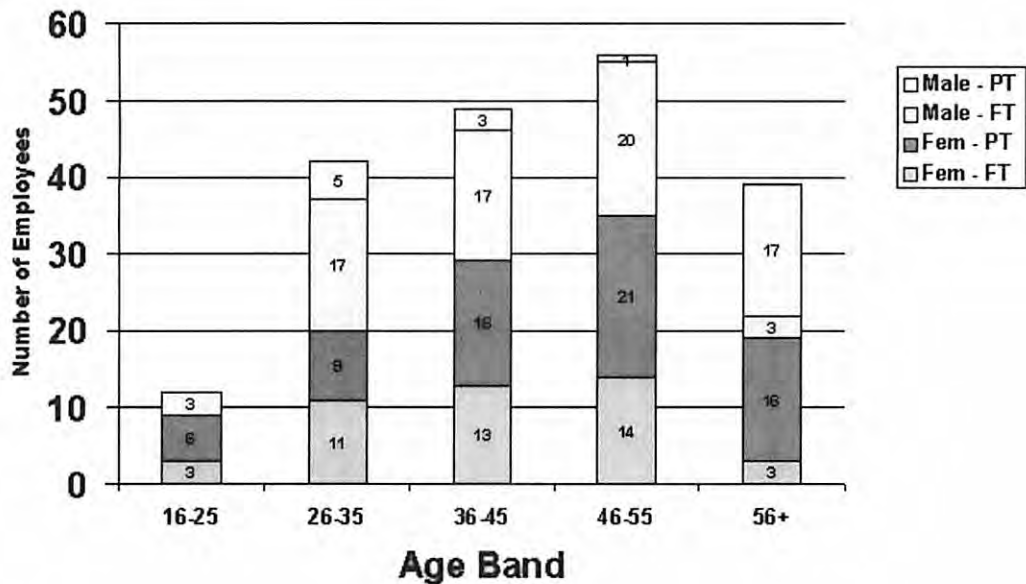
Gender 2011/2012



There is a significant reduction in the female staff profile for this academic year with only a slight reduction in male staff. This is due to more females than males leaving the employment of the College at the end of the 2010/11 academic year.

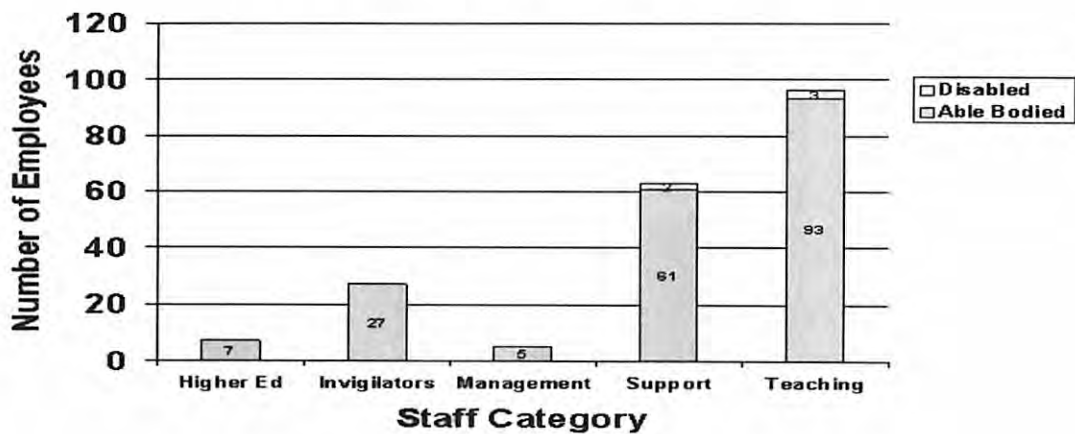
Age and Gender

Gender and Age 2011/2012



Disability

Disability 2011/2012



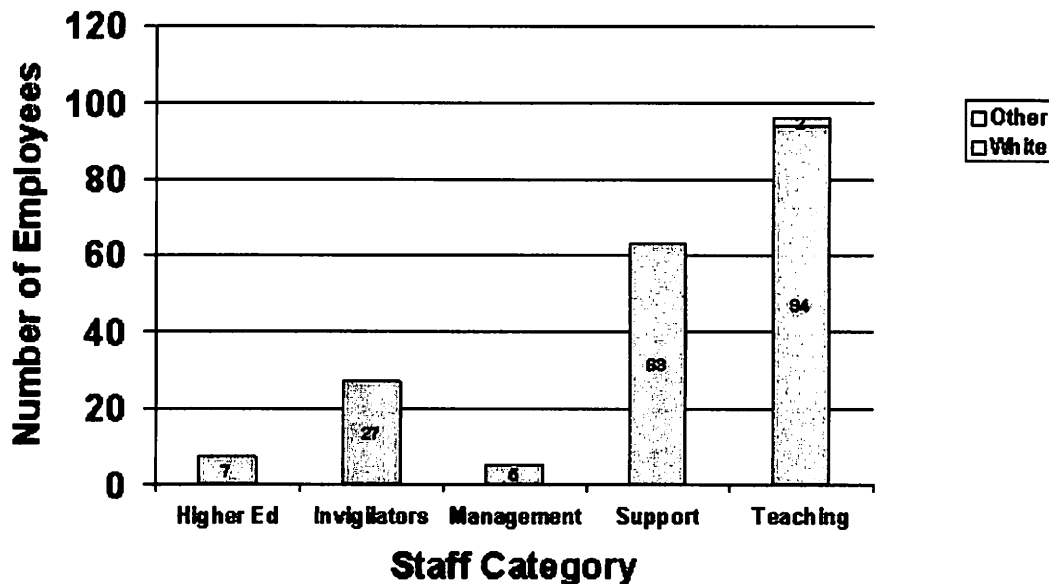
The number of staff with a disability has decreased this year from 8 last year to 5 this year, 2.5% of the staffing profile.

Student Disability

Disability data is taken from the 2010/11 student cohort of 1474 students. The total number of students who stated a disability was 215 - 6.8% of the student profile.

Ethnicity

Ethnicity 2011/2012

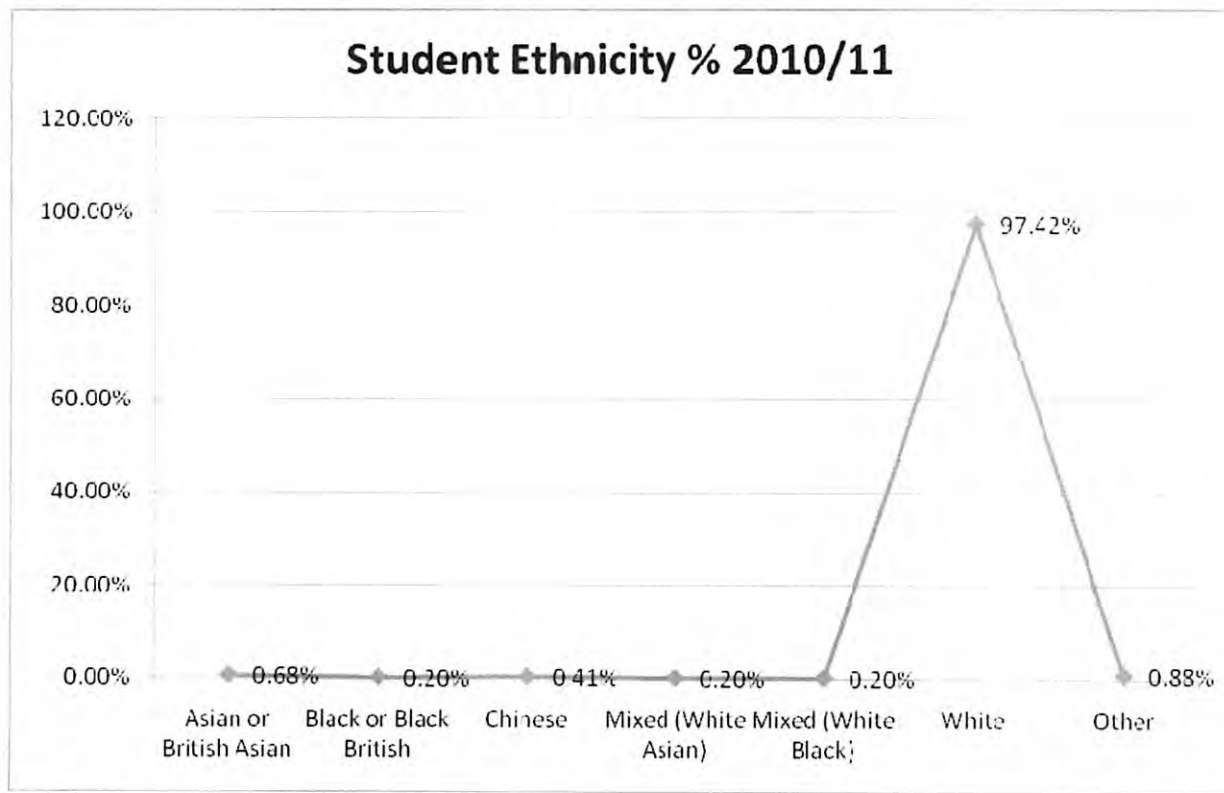
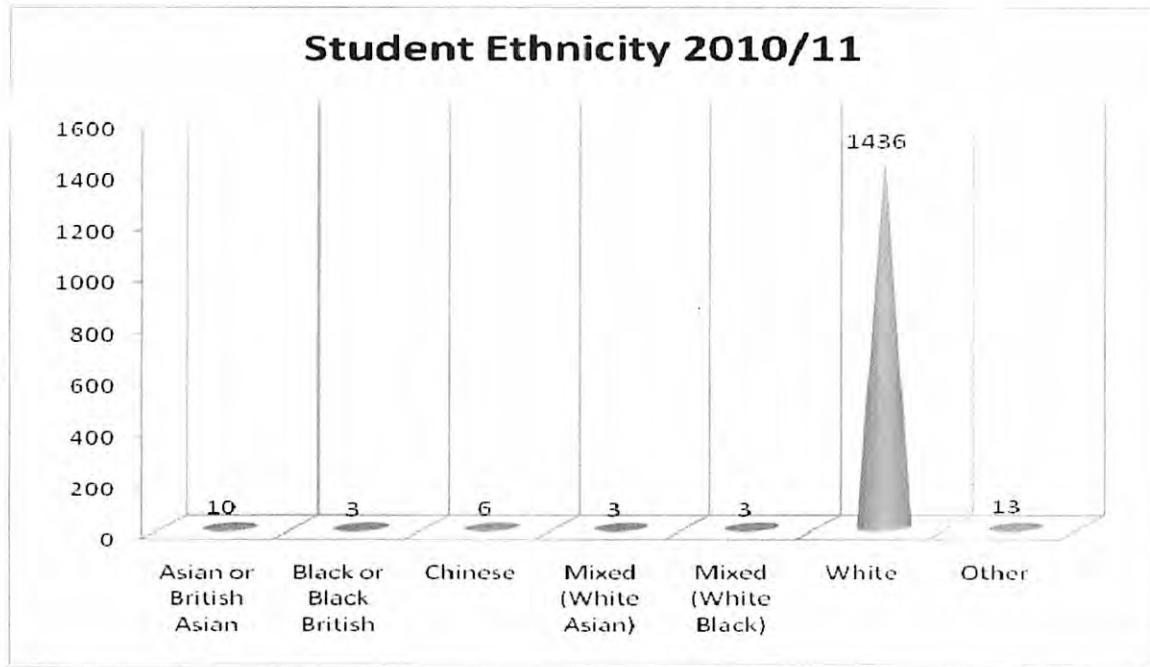


The number of staff with an ethnic origin other than white has decreased this year from 7 last year to 2 this year - 1% of the staffing profile.

In comparison Sefton has a relatively small black and minority ethnic population. According to the 2001 census the ethnic composition of Sefton was 1.6%.

Student Ethnicity

Ethnicity data is taken from the 2010/11 student cohort of 1474 students.



Sexual Orientation & Religion or Belief

The College does not currently collect data on the above two categories. We are looking at measures to collect this data in the future.

Gender Pay Gap

The College Academic and Support staff are paid consistently on equal pay bands regardless of gender.